

SENSO LOCK 30



0767 - Pure Oak Gris



1



LVT INTERLOCKING PLANKS

Class. 23/31



1-Aces

Size: 94 x 15 cm
Code: 3339 0511 - EAN: 3475710265495

2-Walden Blond

Size: 124.5 x 17.8 cm
Code: 3434 0735 - EAN: 3475710355325

3-Haven Grey

Size: 124.5 x 17.8 cm
Code: 3434 0733 - EAN: 3475710355318

4-Pecan

Size: 124.5 x 17.8 cm
Code: 3434 0511 - EAN: 3475710355349

5-Lulea

Size: 124.5 x 17.8 cm
Code: 3434 0736 - EAN: 3475710355332

6-Pure Oak Naturel Miel

Size: 124.5 x 17.8 cm
Code: 3434 0770 - EAN: 3475710374234

7-Pure Oak Naturel Beige

Size: 124.5 x 17.8 cm
Code: 3434 0769 - EAN: 3475710374227

8-Pure Oak Gris

Size: 124.5 x 17.8 cm
Code: 3434 0767 - EAN: 3475710374203

9-Pure Oak Blanc

Size: 124.5 x 17.8 cm
Code: 3434 0768 - EAN: 3475710374210



SENSO LOCK 30



0732 - Rockfell Ash



1



2



3



4



0702 - Wallstreet Light

1-Covent Beige

Size: 60.7 x 30.3 cm
Code: 3377 0774 - EAN: 3475710374197

2-Rockfell Ash

Size: 60.7 x 30.3 cm
Code: 3377 0732 - EAN: 3475710355141

3-Wallstreet Dark

Size: 60.7 x 30.3 cm
Code: 3377 0703 - EAN: 3475710336614

4-Wallstreet Light

Size: 60.7 x 30.3 cm
Code: 3377 0702 - EAN: 3475710336607



SENSO LOCK 20



0775 - Wood 5

1-Wood 1

Size: 93.5 x 14.9 cm
Code: 3392 0674 - EAN: 3475710337703

2-Wood 3

Size: 93.5 x 14.9 cm
Code: 3392 0676 - EAN: 3475710337727

3-Wood 4

Size: 93.5 x 14.9 cm
Code: 3392 0677 - EAN: 3475710337734

4-Wood 5

Size: 93.5 x 14.9 cm
Code: 3392 0775 - EAN: 3475710374289

5-Wood 6

Size: 93.5 x 14.9 cm
Code: 3392 0776 - EAN: 3475710374296

6-Wood 2

Size: 93.5 x 14.9 cm
Code: 3392 0675 - EAN: 3475710337710

7-Stone 1

Size: 60 x 30.7 cm
Code: 3391 0672 - EAN: 3475710337475

8-Stone 2

Size: 60 x 30.7 cm
Code: 3391 0673 - EAN: 3475710337482

LVT INTERLOCKING PLANKS & TILES

Class. 22



TECHNICAL CHARACTERISTICS

			Lock 30	Lock 20
DESCRIPTION				
Total thickness	EN ISO 24346 (EN 428)	mm	4.0	3.4
Thickness of wearlayer	EN ISO 24340 (EN 429)	mm	0.30	0.20
Weight: Mass per unit area	EN ISO 23997 (EN 430)	g/sqm	7760	6782
Size	EN ISO 24342 (EN 427)	cm	planks: 94 x 15 124.5 x 17.8 tiles: 30.3 x 60.7	planks: 93.5 x 14.9 tiles: 30.7 x 60
Planks / Tiles per package	-	planks / tiles	planks: 94 x 15 = 14 124.5 x 17.8 = 8 tiles: 10	planks: 14 tiles: 10
Surface per package	-	sqm	planks: 94 x 15 : 14 = 1.97 124.5 x 17.8 = 1.77 tiles: 1.84	planks: 1.95 tiles: 1.84

CLASSIFICATION

Norm / Product specification	-	-	EN 649	
European classification	EN ISO 10874 (EN 685)	class	23/31	22
Fire rating - Classification	EN 13501-1	class	B _{fl} -s1	
Static electrical propensity	EN 1815	kV	< 2	
Slip resistance wet: ramp test with oil	DIN 51130	class	R9	

PERFORMANCE

Wear Group	EN 649	group	T	
Dimensional stability after exposure to heat	EN ISO 23999 (EN 434)	%	≤ 0.15	≤ 0.10
Residual indentation	EN ISO 24343-1 (EN 433)	mm	≤ 0.10	≤ 0.10
Impact sound insulation	EN ISO 717-2	dB	4	5
Room impact noise	NF S 31074	dB	76	-
Thermal conductivity	EN ISO 10456 (EN 12524)	W/(m.k)	0.25	
Colour fastness	EN 20 105 - B02	degree	≥ 6	
Surface treatment	-	-	PUR+	PUR
Guarantee for residential use	-	year	12	11

ENVIRONMENT / INDOOR AIR QUALITY

TVOC after 28 days	ISO 16000-6	µg/m ³	< 100	
VOC rating (French norm)	-	-	A+	

CE MARKING



EN 14041



Areas of use: domestic use



HEALTH

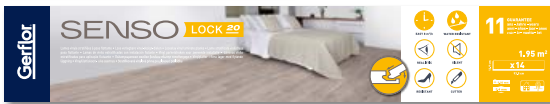
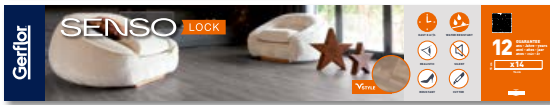
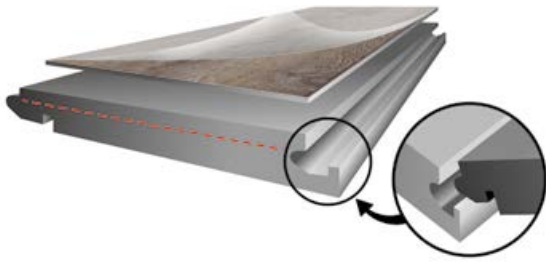
- Formaldehyde-free
- Lead-free, no heavy metals
- Solvent-free
- No harmful plasticizer
- Low VOC emission
- No glue

ENVIRONMENT

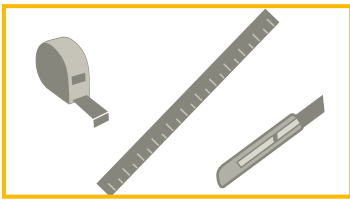
- ISO 14001
- Soapy water cleaning

Laying video

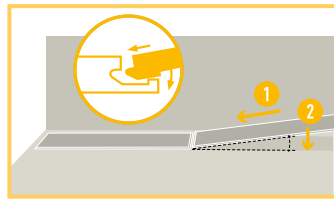




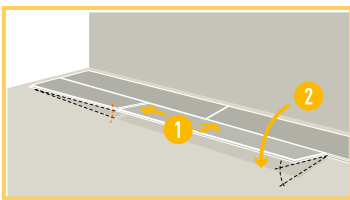
LAYING



Make sure you have a ruler, cutter, cut-resistant gloves and a tape measure handy.



1. Begin laying the planks along one of the walls, starting from the left corner of the room.
2. Lay the next plank at a slight angle to insert the tongue into the groove of the previous plank.



For subsequent planks, assemble the short side then the long side, keeping the plank at an angle.

Cleaning - see page 54

CLICK... IT'S DONE !



QUICK AND EASY INSTALLATION

- No glue
- Can be trimmed with an utility knife
- Fast track laying: 10m²/h



EASY REMOVAL

- Planks are easy to remove



RESISTANT

- 0.3mm (Lock 30) & 0.20mm (Lock 20) wearlayer
- Shock-resistant varnish



SUITABLE FOR WET ROOMS

- Watertight and slip-resistant